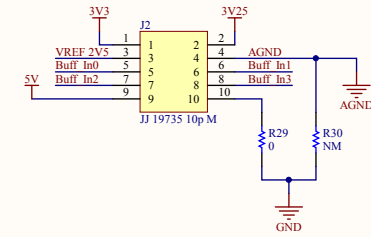
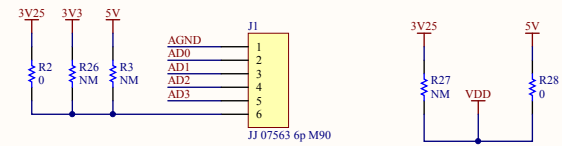
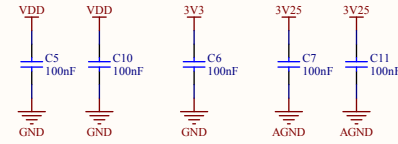
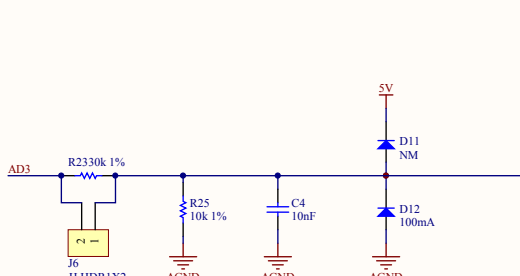
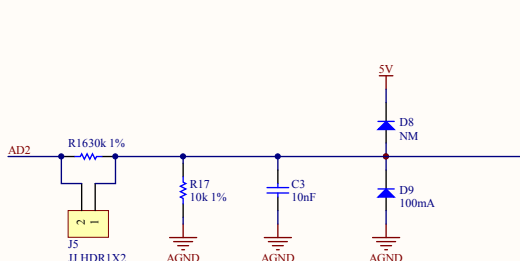
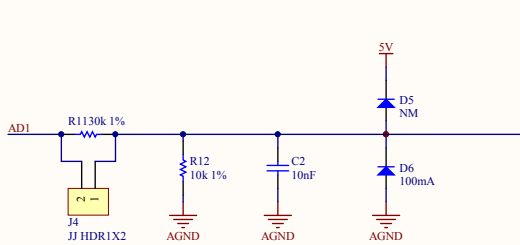
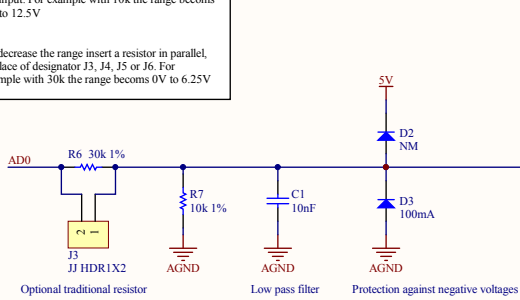


Default analog input level: from 0V to 10V.

To increase the range insert a resistor in series to the input. For example with 10k the range becomes 0V to 12.5V

To decrease the range insert a resistor in parallel, in place of designator J3, J4, J5 or J6. For example with 30k the range becomes 0V to 6.25V



To use 5V on LEDs:
R5, R10, R15, R22, R21 = 6k8 1%
R1, R8, R13, R18, R24 = 10k 1%

To use 3.25V on LEDs:
R5, R10, R15, R22, R21 = 10k 1%
R1, R8, R13, R18, R24 = 6k8 1%

